

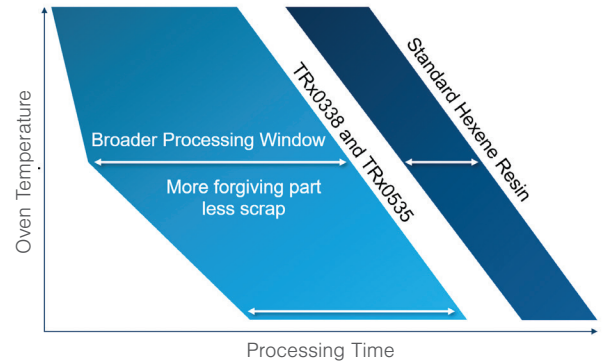


TRx0338 & TRx0535

Fast-Cycling 3 & 5-Melt Rotational Molding Resins

Unprecedented Productivity and Part Performance

Extensive internal and customer testing has demonstrated that NOVAPOL TRx0338 and NOVAPOL TRx0535 resins can reduce cycle times by up to 30%, provide a processing window at least 15% broader than traditional hexene rotomolding resins, and improve low-temperature impact properties. The operational flexibility provided by NOVA Chemicals' new TRx resins makes them suitable for a wide range of applications.



Faster
Cycle
Time



Broader
Processing
Window



Improved
Energy
Savings



Better
Impact
Performance

Features

TRx0338

- 0.125" – 77 J / 57 ft-lb
- 0.250" – 271 J / 200 ft-lb
- Good stiffness (760 MPa / 110 kpsi)

TRx0535

- 0.125" – 66 J / 49 ft-lb
- 0.250" – 238 J / 176 ft-lb
- Good stiffness (680 MPa / 98.6 kpsi)
- Excellent ESCR (> 1000 hrs)
- NSF listed for standards #24, 51, 61
- UL 94 HB



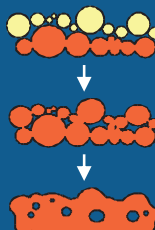
Spotlight

Improve cycle time and differentiate performance by achieving optimal cure due to faster elimination of bubbles

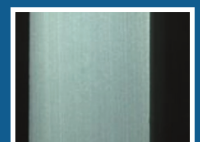
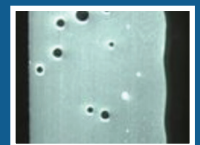
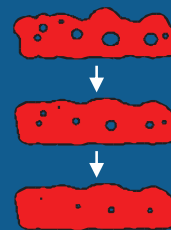
Neck Growth



Bubble Formation



Elimination of Bubbles





Benefits

- More throughput per machine from reduced cycle time
- More stable parts with higher impact & less scrap from improved cure
- Less energy consumption and reduced carbon footprint from lower oven temperatures
- Operational flexibility from a broader processing window
- Material savings from lightweighting due to improved cure
- Potential for resin consolidation from broader processing conditions

Applications

- General purpose custom molding
- Chemical containers
- IBCs & fish boxes
- Septic & agricultural storage tanks
- Recreational – toys, playground, kayaks
- Marine parts
- Waste carts

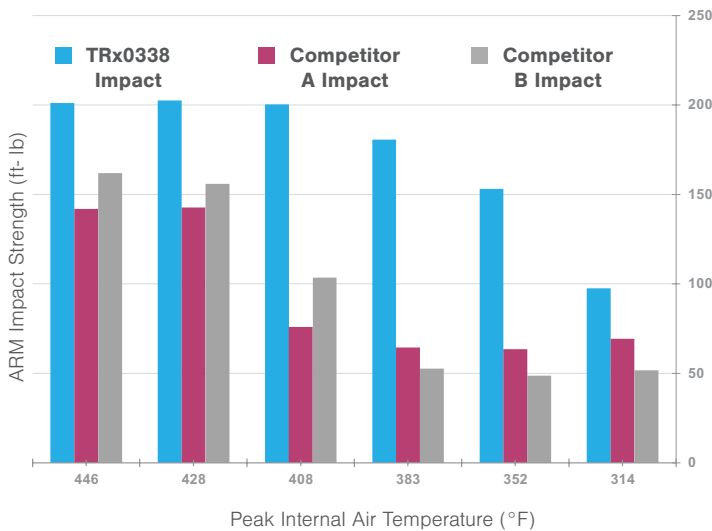
Operational Flexibility - ARM Impact Test

Checkmark indicates a passing result for ductility at a given cook time



Variable Cost Reduction

Increased impact strength at lower oven temperatures allow for parts to be molded using less natural gas



Cycle Time Improvement

TRx provides a lower temperature processing window

