

# Future Rokeby Site Construction Newsletter

Issue #6 December 2018

## Construction Lighting

Over the next few weeks temporary construction lighting is being installed adjacent to on-site parking lots and roadways.

These lights operate on a timer and are controlled in order to manage offsite impact.

## Construction Progress: A Year in Review

It has been a year since we announced our decision to build a new polyethylene facility – a second Advanced SCLAIRTECH™ technology facility (AST2) located at the new Rokeby Site.

And what a year it has been! Our employees and contractors are making great strides!

We started preliminary work in late 2017, and since then the site has undergone a dramatic transformation.

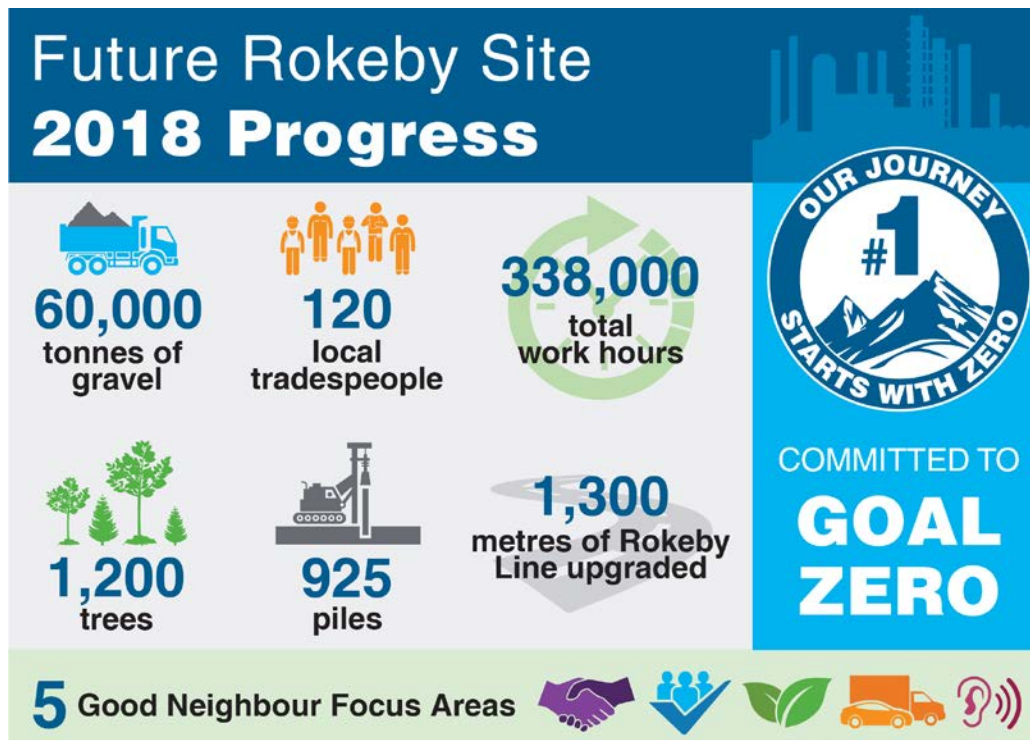
This newsletter is intended to share information on construction of our new Rokeby Site.

The project involves the construction of a second Advanced SCLAIRTECH™ technology facility (AST2) to be located at the new Rokeby Site, adjacent to our Corunna Site.

With a capacity of approximately one billion pounds of polyethylene per year, the facility will allow us to continue to grow our polyethylene business in high performance applications and will provide greater supply reliability for our customers. Construction is underway with start-up targeted for late 2021.

This project is part of a capital investment of approximately \$2 billion for two new significant projects for our St. Clair Township operations: the new polyethylene facility and the next phase in the expansion of our Corunna Site cracker.

Site preparations are underway and detailed engineering work continues, with approximately 120 local tradespeople currently on-site.



Continued on page two.

# Future Rokeby Site Construction Newsletter

## Construction Progress: A Year in Review

- A berm was built to mitigate sound coming from the future facility
- Trucks have delivered over 60,000 tonnes of gravel to create roadways and parking lots on-site
- Rokeby Line was upgraded to accommodate increased traffic volumes
- The new main access road into the site was built and opened
- Piling work continues to lay the foundation of the new facility
- 1,200 trees have been planted and a natural woodlot is starting to take shape, designed to recreate the woodland features previously in place in other areas before construction began

Looking ahead, 2019 is shaping up to be another exciting year.

Over the next few months we will complete on-site parking lots and roadways, progress foundations through cement deliveries, continue tree planting and begin receiving equipment deliveries, including structural steel.

We're proud of our progress to date and look forward to keeping you updated as we roll into the second year of construction at the future Rokeby Site!



Visit our YouTube channel to watch a video of our exciting construction progress! Please visit [youtube.com/novachemicalsinc](https://youtube.com/novachemicalsinc)

## New, Updated Website for Construction News

Our recently updated website is your one-stop shop for timely news and information related to our growth projects.

Visit

[www.novachem.com/Page/sarnia-Lambton/growth-in-Ontario.aspx](http://www.novachem.com/Page/sarnia-Lambton/growth-in-Ontario.aspx) for:

- Project overviews
- Construction schedules and progress
- Newsletters and fact sheets
- Information on how to work and do business with us



**Responsible Care<sup>®</sup>**  
Our commitment to sustainability.

We are committed to Responsible Care and sustainability in our daily operations as well as our future growth.

As part of this commitment, community outreach is important to us. We make concerted efforts to understand and respond to concerns and seek input about our plans and operations through public consultation and communication.

**We value your input and suggestions. Please contact us:**

1-888-220-5880

[manestcomm@novachem.com](mailto:manestcomm@novachem.com)

[www.novachem.com/Pages/sarnia-Lambton/growth-in-Ontario.aspx](http://www.novachem.com/Pages/sarnia-Lambton/growth-in-Ontario.aspx)