

Future Rokeby Site

Construction Newsletter

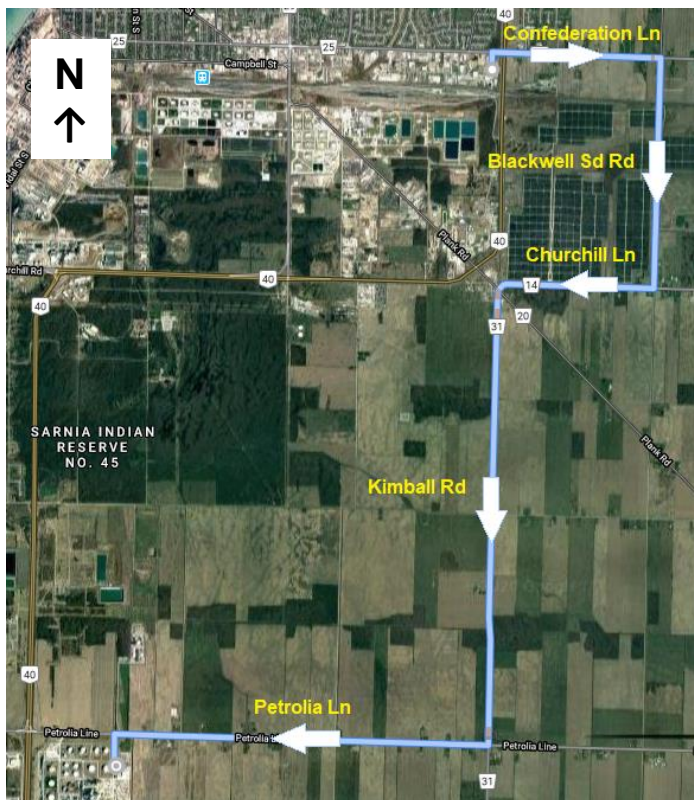
Issue #15 January 2020

Petrolia Line Temporary Lane Closure

On Wednesday, January 29 and Thursday, February 27, deliveries are scheduled to take place from a local fabricator.

Accompanied by police and utility escorts, spotters and other support, the deliveries are large dryers bound for Corunna Site in support of the Corunna Cracker Expansion project.

On these delivery days, a three-hour single lane closure is occurring on Petrolia Line starting at 9:00 am. Two-way traffic will be managed by traffic control personnel on the east-bound lane. The community should also anticipate slow-moving traffic and possible delays along the delivery route, which is shown below:



Information updates for these equipment deliveries will be shared with the community via the CAER Industry Update line as required. Please call 1-855-4SARNIA or 1-855-472-7642. The update line is a 24-hour service that features information on industry activity through pre-recorded telephone messages. The update line is available to all Lambton County residents.

This newsletter is intended to share information on construction of our new Rokeby Site.

The project involves the construction of a second Advanced SCLAIRTECH™ technology facility (AST2) to be located at the new Rokeby Site, adjacent to our Corunna Site.

With a capacity of approximately one billion pounds of polyethylene per year, the facility will allow us to continue to grow our polyethylene business in high performance applications and will provide greater supply reliability for our customers. Construction is underway with start-up targeted for late 2021.

This project is part of a capital investment of approximately \$2 billion for two new significant projects for our St. Clair Township operations: the new polyethylene facility and the next phase in the expansion of our Corunna Site cracker.

Construction is underway with approximately 600 tradespeople currently on-site.

Future Rokeby Site Construction Newsletter

Large Deliveries Continue in 2020

As we progress construction of the new polyethylene facility and the expansion of our Corunna Site cracker, we anticipate weekly equipment deliveries to our Rokeby and Corunna Sites.

Piperacks from a fabricator on Polymoore Drive are arriving 2-3 times a week and are expected to continue at this pace through April. Travelling at a speed of 1 km per hour, these deliveries typically occur between 10:00 am and 2:00 pm. The delivery route is:

- North on Polymoore Drive to Hill St/Petrolia Line
- East on Hill St/Petrolia Line to Corunna Site Gate 3

Shift in Construction Worker Vehicle Traffic

In September we shared with you that construction worker vehicle traffic began to access Rokeby Site from its main entrance at 804 Rokeby Line. To safely accommodate the increase of construction workers at the site, the northeast parking lot accessible from Gate 3 on Petrolia Line is now being used as a smaller, secondary parking lot. The majority of vehicles are still entering the site from Rokeby Line.

Please continue to use caution and be patient as you travel along Rokeby and Petrolia Lines, especially during peak construction traffic times on weekdays from:

- 6:00 am – 8:00 am, and
- 3:00 pm – 5:00 pm.

Traffic management plans are continuously monitored to assess whether control measures need to be implemented to enhance safety and reduce risk.

We understand that this may cause inconvenience and we continue to work with our contractors, subcontractors and multiple local agencies to reduce the impact of our construction activities and to maintain safety as our highest priority.



Being a Good Neighbour

Being a good neighbour in our community is an important goal for us at NOVA Chemicals. With construction of our growth projects in full swing, our desire to achieve this goal is stronger than ever.

Our Good Neighbour Program establishes our specific commitments and actions to manage the impact of our construction activities. We and our contractors are all committed to strategies that proactively consider impacts and opportunities for stakeholders and build positive community relations.

Please visit our website for more information.



Responsible Care[®]
Our commitment to sustainability.

We are committed to Responsible Care and sustainability in our daily operations as well as our future growth.

As part of this commitment, community outreach is important to us. We make concerted efforts to understand and respond to concerns and seek input about our plans and operations through public consultation and communication.

We value your input and suggestions. Please contact us:

1-888-220-5880

manestcomm@novachem.com

www.novachem.com/locations/sarnia-lambton-on-canada/growth-in-ontario/