

Making Growth Happen

December 2019

In collaboration with skilled tradespeople and businesses, NOVA Chemicals is making good progress on our construction projects.

Over the past decade NOVA Chemicals has invested nearly **\$1.2 billion** into our Ontario manufacturing facilities in St. Clair Township. Construction is currently underway on:

1. **New Polyethylene Facility:** A second Advanced SCLAIRTECH™ technology facility (AST2) located at the new Rokeby Site.
2. **Corunna Cracker Expansion (Phase 3):** Linked to AST2 as it will provide ethylene feedstock.

These projects represent an additional **\$2.2 billion** investment that will strengthen the area's growth and our long-term viability. Facility start-up is targeted for late 2021.

There are currently approximately 800 skilled tradespeople on site across both projects, with the majority sourced from the local area. As construction progresses, our projects will result in significant construction employment opportunities — estimates are for several million construction labour hours.

We estimate these projects will create approximately 150 permanent full-time jobs between NOVA Chemicals direct hires and contractors. We also estimate the spin-off impact will result in approximately 750 additional new jobs in the local community.*

At this point in the projects, equipment is being delivered to site every week from local fabrication shops and others. The community should anticipate slow-moving traffic and possible delays on area roads. We encourage you to buckle up, drive safely, and keep your eyes and mind on the road.

We understand this may cause inconveniences to our neighbours and the community. We continue to work with our contractors, subcontractors and multiple local agencies to coordinate all aspects of each delivery as part of our continued efforts to reduce the impact of our construction activities and to maintain safety as our highest priority.

We value our communities and thank you for your support!

**Based on the Chemistry Industry Association of Canada's commonly used multiplier effect for investments in the manufacturing sector of five indirect jobs from every direct job.*

NOVA Chemicals helps shape a world where products vital to our health and happiness are even better tomorrow than they are today.

Our mission is to be the leader in innovation that enables our customers to deliver plastic products that make everyday life healthier, easier and safer.

Our plastic resins are used in packaging, durable goods, and a wide range of other consumer and industrial applications, including playsets, kayaks and recycling bins. We help our customers make products more sustainable through ongoing research and development.



Responsible Care®
Our commitment to sustainability.

Through our commitment to sustainability and Responsible Care® principles, our employees consistently work to ensure health, safety, security and environmental stewardship throughout every facet of our operations.

How to contact us:

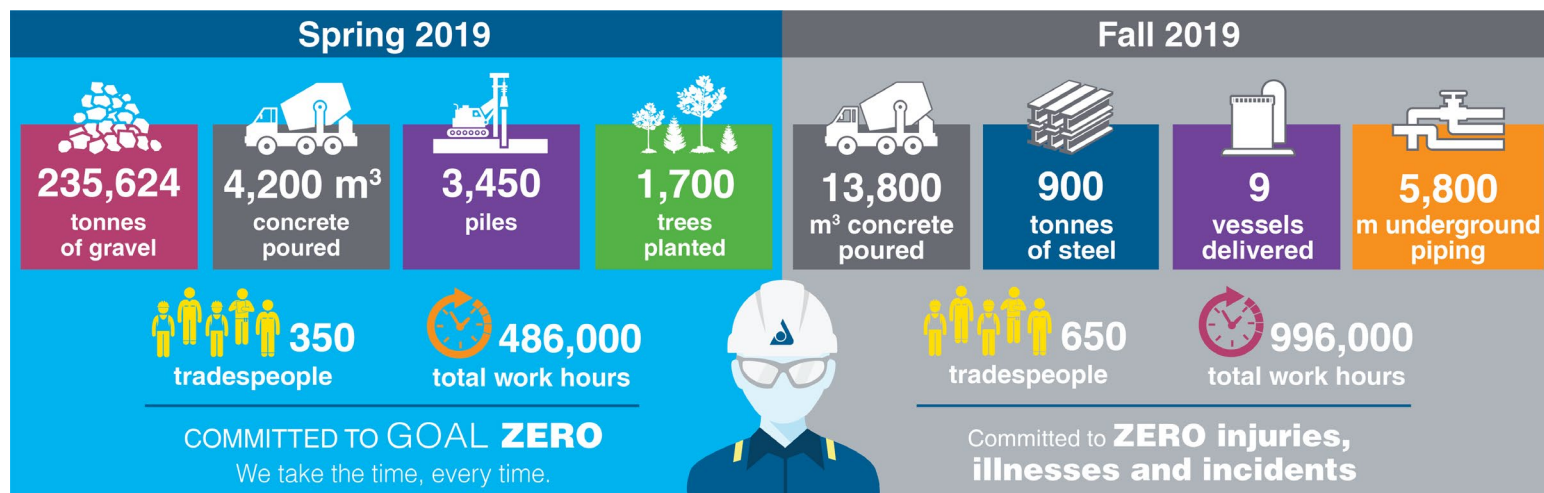
manestcomm@novachem.com
www.novachem.com/Pages/sarnia-lambton/growth-in-ontario.aspx

Connect with us!



Growth in St. Clair Township

Future Rokeby Site Progress to Date








Aerial view of the reactor structure taking shape and other construction activities at the future Rokeby Site.



The first piperack module delivered to the future Rokeby Site.

How we are committed to being a Good Neighbour

				
Communications	Employment	Environment	Traffic	Noise
<ul style="list-style-type: none"> • Create opportunities for stakeholder feedback • Continue to consult with directly and potentially impacted stakeholders 	<ul style="list-style-type: none"> • Create opportunities to connect the construction workforce with local businesses • Promote local employment and business development opportunities 	<ul style="list-style-type: none"> • Meet our permitting and regulatory requirements • Implement a plan for tree planting • Work with our contractors to minimize material waste and over supply 	<ul style="list-style-type: none"> • Implement a traffic management plan • Proactively anticipate traffic impacts, particularly during peak times and movements of heavy equipment • Promote safe driving behaviours 	<ul style="list-style-type: none"> • Schedule work primarily during daytime hours • Construct a berm