

# NOVA Chemicals Community Nature Trail

## PE1 Expansion Legacy Project

2019

### Project Marks Significant Growth Milestone

To mark a significant growth milestone — NOVA Chemicals' Polyethylene 1 Expansion Project at the Joffre Site — we announced this environmental legacy project in 2013.

**The NOVA Chemicals Community Nature Trail is now being enjoyed by the community and our employees.**



### About This Unique Area

The area of the Community Nature Trail is unique in many ways and demonstrates how wildlife habitat / agricultural / industrial / recreational land uses can exist harmoniously together. Historically, the area was first settled as early as 1909. A local family continues to lease portions of the land from NOVA Chemicals for cattle grazing use.

This land has never been tilled for agricultural use and vegetation includes native grasses, willow, bush, poplar and aspen stands. The area also supports wetlands and has natural drainage channels to Jones Creek. The wetlands and vegetation offer a great habitat for birds and other wildlife.

The new stormwater management system built as part of NOVA Chemicals' rail yard expansion to the west of this area enhances the wetland / habitat capability.

The trail system provides an excellent opportunity for people to connect with nature and learn about local wildlife and plants — as well as the area's history.

Now that the trail is open, we continue to seek input from the community and trail users to ensure the enjoyment of all.

**We welcome your input and suggestions about, and any photos of the trail. Email us at: [joffresite@novachem.com](mailto:joffresite@novachem.com)**

### Amenities

- 5 km of looped trails
- Parking area and trail head
- Picnic areas (incorporating recycled plastic materials wherever possible)
- Small bridge crossings
- Interpretive signage
- Benches to site, relax and enjoy nature
- Reforestation



In 2018, an **Educational Pollinator Trail** was added to the NOVA Chemicals Community Nature Trail. The pollinator trail includes a bee hotel and native plantings to help enhance local pollinator populations and provide a favourable habitat. Alberta native pollinators include bees, butterflies, wasps, moths, flies, beetles and hummingbirds.



# Welcome: Come visit NOVA Chemicals Community Nature Trail

Here are a few things you will need to know. You will also find this information on the entrance signs at the nature trail.

## FOOT ACCESS ONLY

Recreational trails—for permitted uses only.  
**USE AT YOUR OWN RISK.**

**For your safety and to preserve the beauty of this area:**



**Stay on marked trails**



**Watch for thin ice**



**No fires**



**No camping**



**No hunting**



**No picking flowers**



**No feeding wildlife**



**Keep dogs on a leash**



**Pick up after your dog**  
Bags provided



**Carry out your garbage**

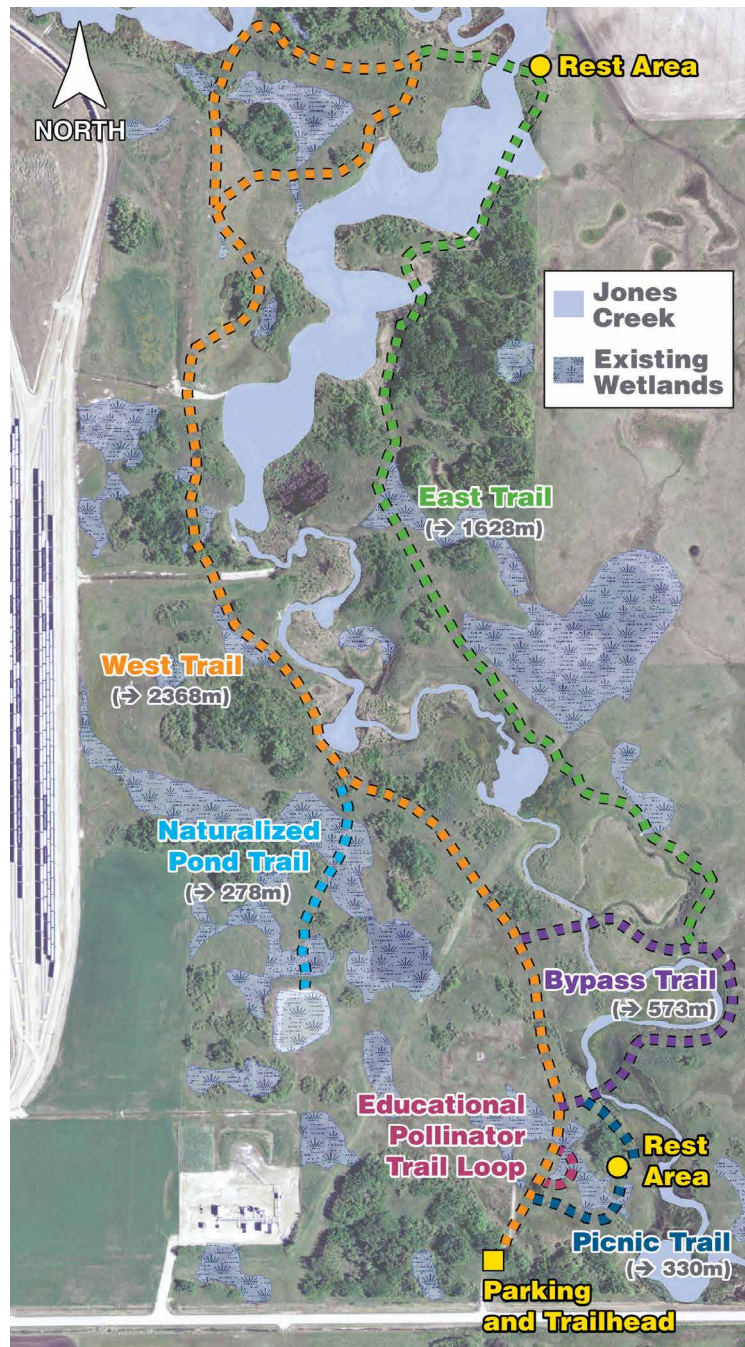
**All recreational users must sign in before using the trail and sign out before leaving.**

A box to the right of the entrance sign contains the register.

Industry in the area regularly tests safety sirens. If you hear an alarm or siren when you are there, please call the NOVA Chemicals number below before using the trails.

**For emergencies or concerns, please call 403-314-8767 (24 hours).**

**Trail Hours: Sunrise to Dusk**  
*No entry outside these hours*



Marked trails, viewpoints, benches and a picnic area invite you to explore this 89-hectare (220-acre) site located just north of NOVA Chemicals Joffre Site (see map). Signage along the trail identifies some of the area's special features.

# How to get to NOVA Chemicals Community Nature Trail



## NATURE TRAIL PARKING LOT

GPS COORDINATES

LATITUDE: 52-19'-03.36552" N

LONGITUDE: 113-32'-41.52247" W