

NOVA Chemicals Community Nature Trail

PE1 Expansion Legacy Project

October 2015

Project Marks Significant Growth Milestone

To mark a significant growth milestone — NOVA Chemicals' Polyethylene 1 Expansion Project at the Joffre Site — we announced this environmental legacy project in 2013.

The NOVA Chemicals Community Nature Trail is now open for the enjoyment of the community and our employees.



About This Unique Area

The area of the Community Nature Trail is unique in many ways and demonstrates how wildlife habitat / agricultural / industrial / recreational land uses can exist harmoniously together. Historically, the area was first settled as early as 1909. A local family continues to lease portions of the land from NOVA Chemicals for cattle grazing use.

This land has never been tilled for agricultural use and vegetation includes native grasses, willow, bush, poplar and aspen stands. The area also supports wetlands and has natural drainage channels to Jones Creek. The wetlands and vegetation offer a great habitat for birds and other wildlife.

The new stormwater management system built as part of NOVA Chemicals' rail yard expansion to the west of this area enhances the wetland / habitat capability.

The trail system provides an excellent opportunity for people to connect with nature and learn about local wildlife and plants — as well as the area's history.

Amenities

- 5 km of looped trails
- Parking area and trail head
- Picnic areas (incorporating recycled plastic materials wherever possible)
- Small bridge crossings
- Interpretive signage
- Reforestation

Ongoing Consultation

NOVA Chemicals consulted with Lacombe County, the Joffre Community Advisory Panel and other stakeholders to determine the feasibility of this plan and to ensure the trail adds value to the community. Stakeholders are very supportive of this initiative. Now that the trail is open, we continue to seek input from the community and trail users to ensure the enjoyment of all.

For your input and suggestions, please email us at joffresite@novachem.com

Welcome: Come visit NOVA Chemicals Community Nature Trail

Here are a few things you will need to know. You will also find this information on the entrance signs at the nature trail.

FOOT ACCESS ONLY

Recreational trails—for permitted uses only.

USE AT YOUR OWN RISK.

For your safety and to preserve the beauty of this area:



Stay on marked trails



Watch for thin ice



No fires



No camping



No hunting



No picking flowers



No feeding wildlife



Keep dogs on a leash



Pick up after your dog
Bags provided



Carry out your garbage

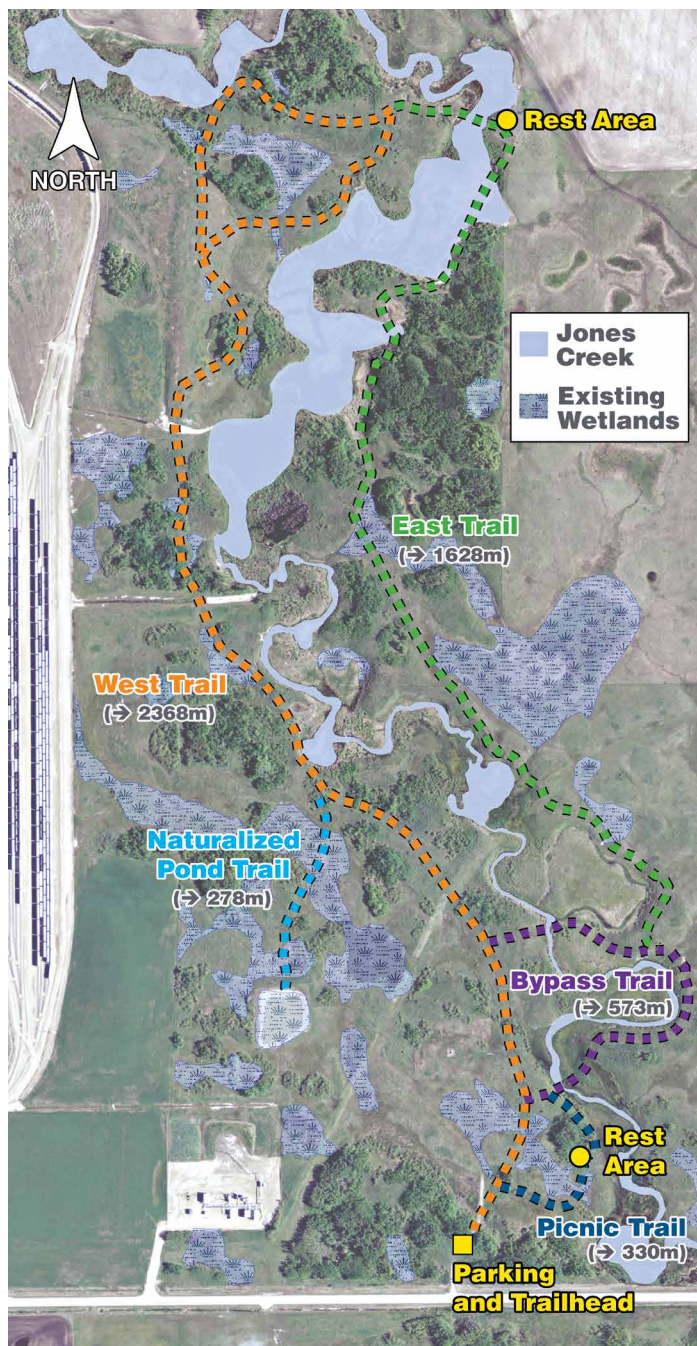
All recreational users must sign in before using the trail and sign out before leaving.

A box to the right of the entrance sign contains the register.

Industry in the area regularly tests safety sirens. If you hear an alarm or siren when you are there, please call the NOVA Chemicals number below before using the trails.

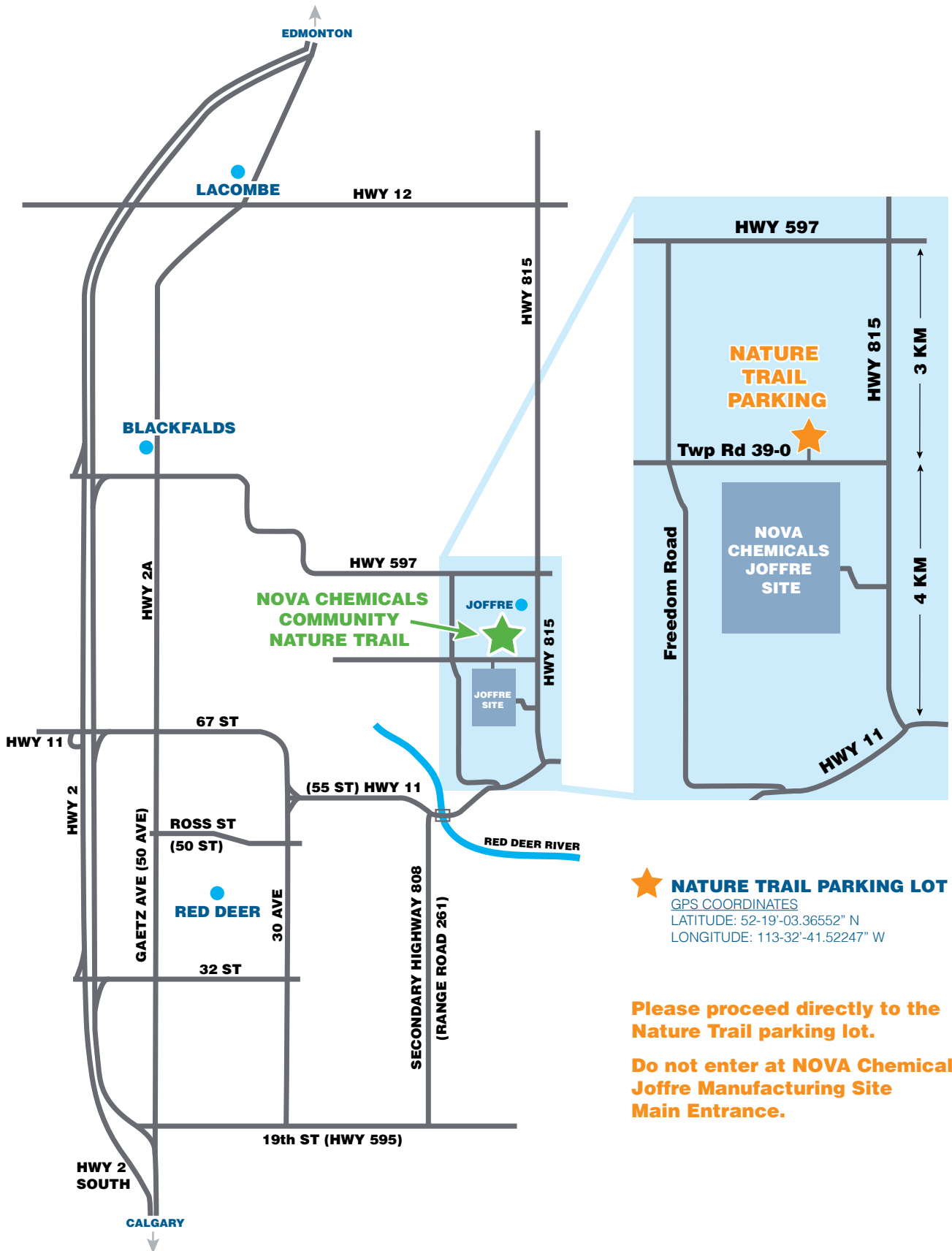
For emergencies or concerns, please call 403-314-8767 (24 hours).

Trail Hours: Sunrise to Dusk
No entry outside these hours



Marked trails, viewpoints, benches and a picnic area invite you to explore this 89-hectare (220-acre) site located just north of NOVA Chemicals Joffre Site (see map). Signage along the trail identifies some of the area's special features.

How to get to NOVA Chemicals Community Nature Trail



★ NATURE TRAIL PARKING LOT
GPS COORDINATES
LATITUDE: 52-19-03.36552° N
LONGITUDE: 113-32-41.52247° W

Please proceed directly to the Nature Trail parking lot.

Do not enter at NOVA Chemicals Joffre Manufacturing Site Main Entrance.